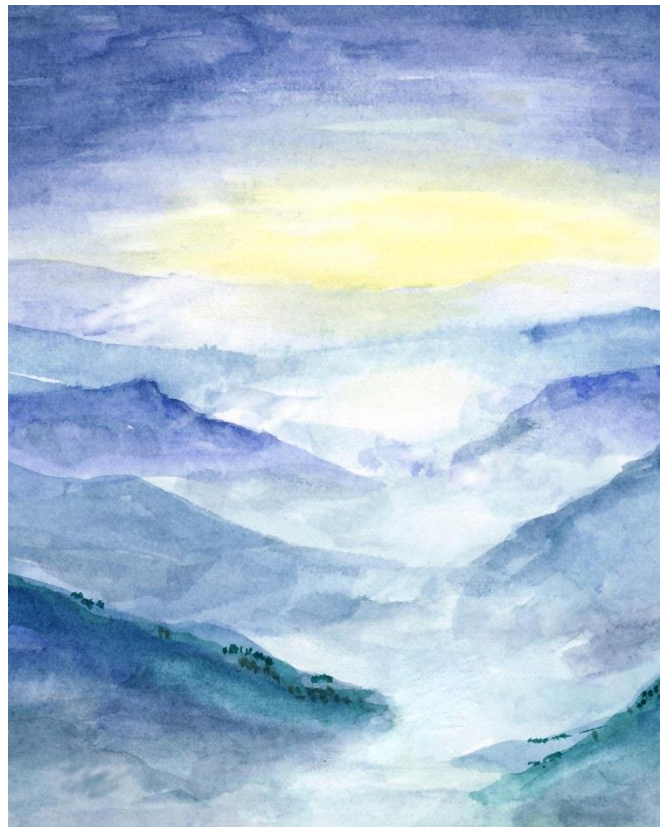
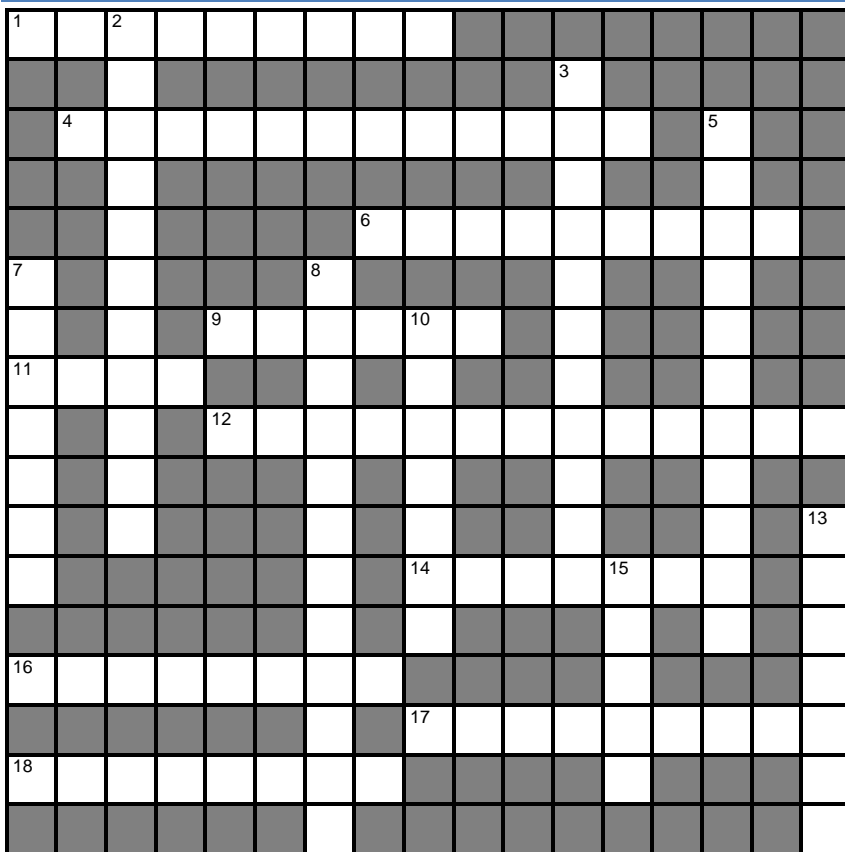


# CROSSWORD PUZZLE

THIEF IN THE PARK: CHAPTERS 33 - 37



## WORD LIST

alternative  
careening  
consequences  
dilemma  
discern  
episode

extracted  
fundamental  
illegal  
instinctively  
isolated  
jubilant

lucrative  
lush  
meticulously  
moral  
probed  
trespassing

## CLUES

### Across

- 1 pulled out, removed (9)
- 4 painstakingly, methodically, carefully (12)
- 6 moving headlong or carelessly, lurching or swerving while in motion (9)
- 9 searched, explored (6)
- 11 grassy, green, growing vigorously with luxuriant foliage (4)
- 12 impulsively, automatically, spontaneously (13)
- 14 a difficult problem, a situation involving unpleasant choices (7)
- 16 thrilled, triumphant (8)
- 17 producing wealth, profitable, rewarding (9)

- 18 separated from others, out-of-the-way, remote (8)

### Down

- 2 intruding, unlawfully entering the land of another (11)
- 3 option, other choice (11)
- 5 basic, essential, deep-seated (11)
- 7 unlawful, against the law (7)
- 8 results, aftereffects, outcomes (12)
- 10 incident, event, experience (7)
- 13 understand, perceive (7)
- 15 having to do with principles of right and wrong behavior, ethical (5)

